

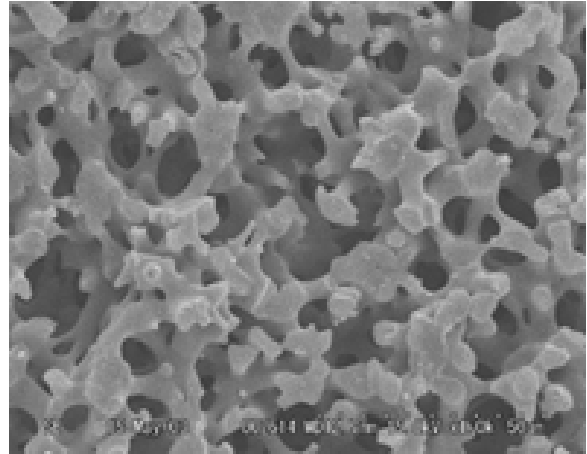
MonoFas[®] mini DNA Blood Kit

Extraction of genome DNA from 2uL of whole blood

Available in the near future

This kit is designed for the purpose of DNA purification from valuable or trace amounts of blood, biological fluids and bloodstains.

Adaptive analytes are such as fresh and frozen whole blood (anticoagulant), buffy coat, bone marrow fluid, lymphocytes, leucoctyes, biological fluids.

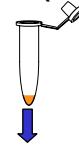


Monolith Silica

Through pore diameter 15um
Meso-pore 10nm

Simple!!! Only 3 steps

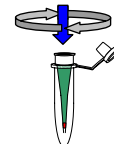
Blood (2 – 10uL)



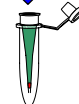
Add 2 volumes of Binding Buffer A and dissolve at 70C, 5min



Bind

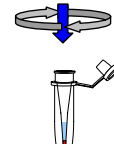


Centrifuge for a minute at 10,000rpm

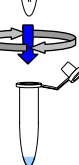


Wash

Washing Buffer B
50uL

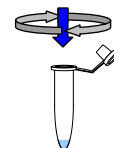


Centrifuge for a minute at 10,000rpm



Elute

Elution Buffer C
2 – 5uL



Centrifuge for a minute at 10,000rpm
Elute

Purified genome DNA

Fast extraction and purification in 10 minutes

Ethanol precipitation, phenol/chloroform extraction, RNase and proteolytic enzymes are not required.
No contamination of an organic solvents and toxic reagents in elution buffer.

Clean and high recovery

High purity: A260/280 > 1.7
Elution buffer is sodium free

Elution by only 2uL is possible

High purity eluent can be applied directly for efficient PCR amplification.

High sample load-ability for trace amount of sample

For 2 – 10uL of whole blood,
Elution amount: 2 – 5uL, Volume: 50uL can be applied.

For each and every applications

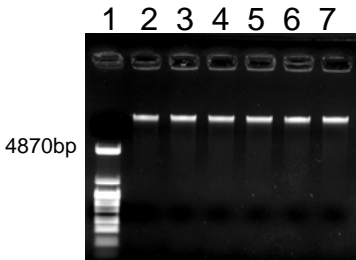
PCR amplification, restriction enzyme digestion, virus, bacteria/fungal analysis, cancer research, human genetic tests, forensic medicine tests.

Purification from the whole blood!

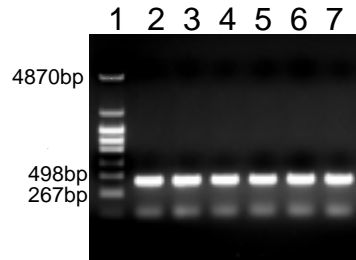
Purified the genome DNA in the human whole blood of 10uL by MonoFas mini DNA Blood Kit .
Eluted 5uL by Buffer C.

Direct PCR amplification

Using the purified genome DNA from the left, a PCR amplification was operated on the gene sequences of human -Globin(408bp).

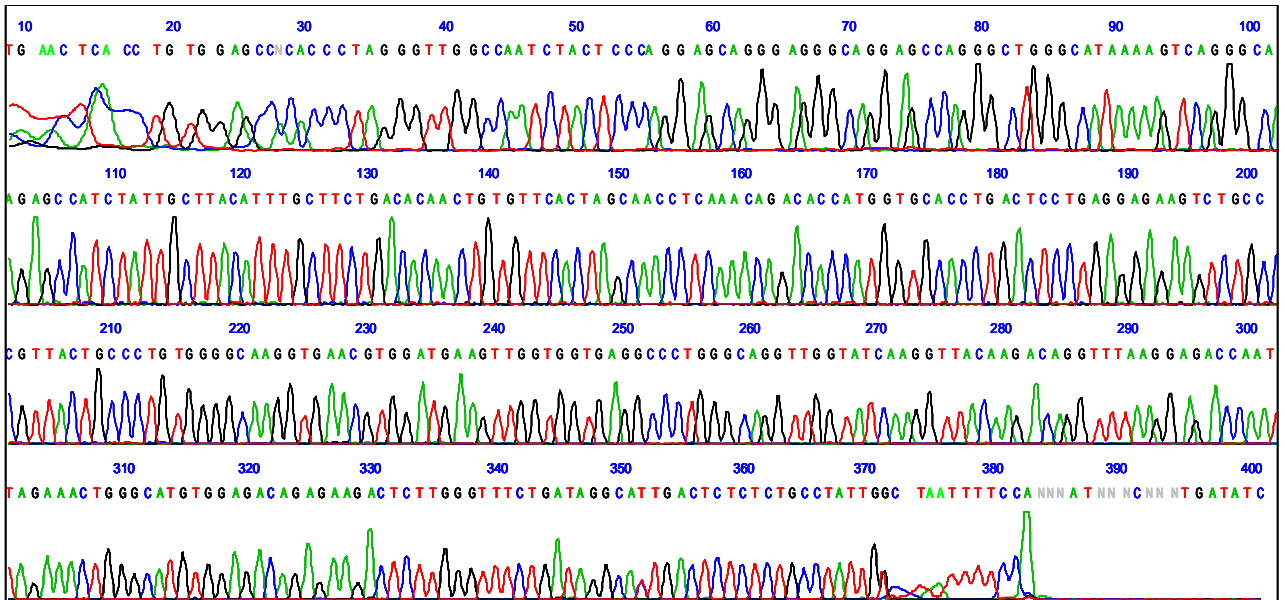


Lane 1: pHY Marker
Lane 2 - 7: Eluate



Lane 1: pHY Marker
Lane 2 - 7: PCR reaction solution

Fluorescent sequencing can be used



Sample: DNA to make it amplify from human genome by using Takara PCR Kit .
Sequence data analyzed with ABI Prism 3730xl Genetic Analyzer

“Licensed by Merck KGaA” by “based on monolithic technology, Merck KGaA, Darmstadt, Germany”